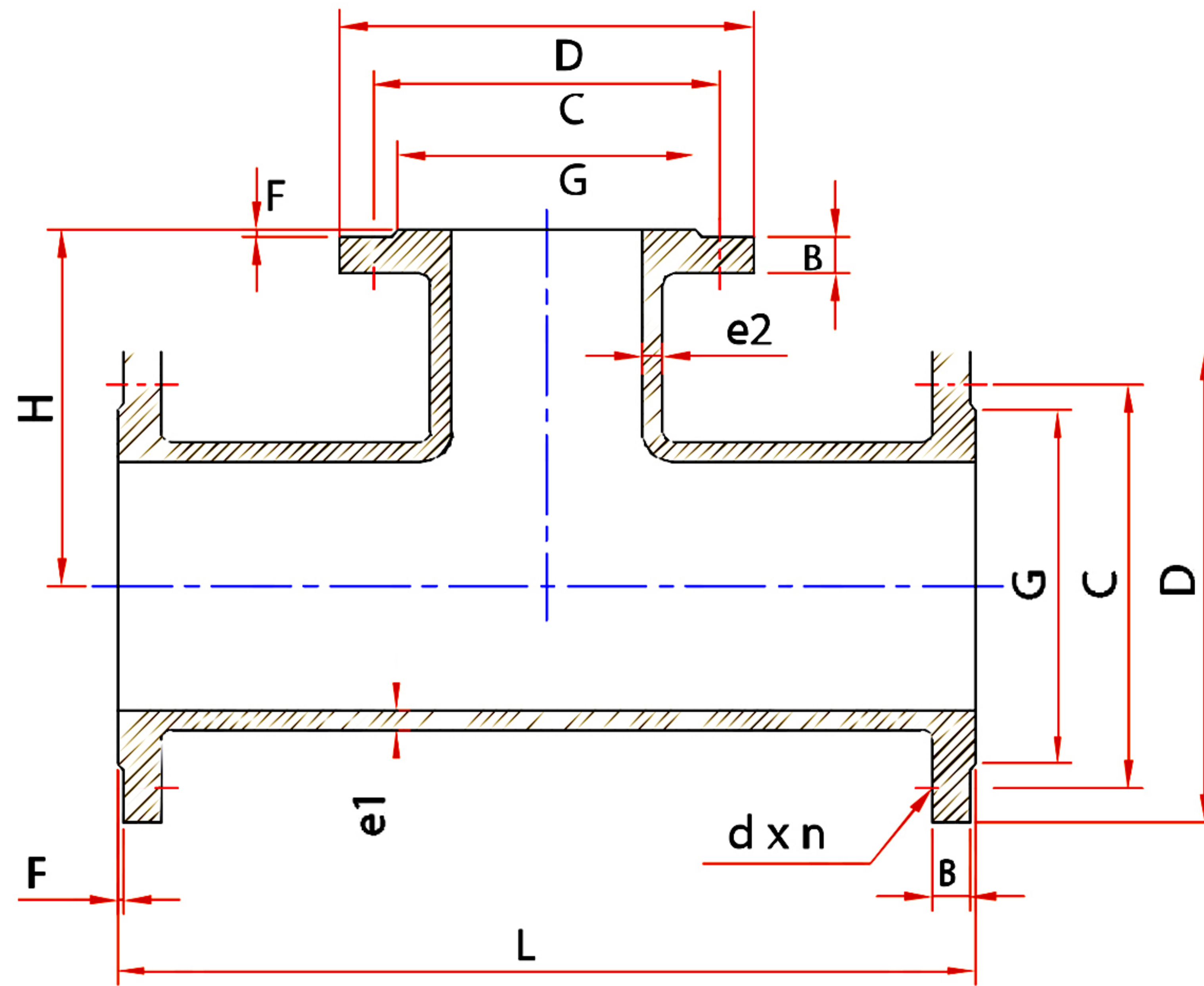


สามทางปลายหน้างาน 3 ด้าน



DN	BODY									DN	BRANCH								
	D	C	G	B	F	d	n	e1	L		D	C	G	B	F	d	n	e2	H
80	200	100	133	21	3	19	8	10	400	80	200	160	133	21	3	19	8	10	190
100	220	180	156	21	3	19	8	10.5	400	80	200	160	133	21	3	19	8	10.5	190
										100	220	180	156	22	3	19	8	10.5	200
150	285	240	211	23	3	23	8	11.7	500	80	200	160	133	21	3	19	8	11.7	215
										100	220	180	156	22	3	19	8	11.7	225
										150	285	240	211	23	3	23	8	11.7	250
200	310	295	266	23	3	23	8	12.8	600	80	200	160	133	21	3	19	8	12.8	240
										100	220	180	156	22	3	19	8	12.8	250
										150	285	240	211	23	3	23	8	12.8	275
										200	340	295	200	23	3	23	8	12.8	300
250	395	350	319	25	4	23	12	14	700	80	200	160	133	21	3	19	8	13	265
										100	220	180	156	22	3	19	8	13.5	275
										150	285	240	211	23	3	23	8	14	300
										200	340	295	266	23	3	23	8	14	325
										250	395	350	319	25	4	23	12	14	350
300	445	400	370	24	4	23	12	15.2	800	80	200	160	133	21	3	19	8	13	290
										100	220	180	156	22	3	19	8	13.5	300
										150	285	240	211	23	3	23	8	15	325
										200	340	295	266	23	3	23	8	15.2	350
										250	395	350	319	25	4	23	8	15.2	375
										300	445	400	370	24	4	23	12	15.2	400
400	565	515	480	25	4	28	16	17.5	900	200	340	295	266	23	3	23	8	16.5	350
										250	395	350	319	25	4	23	12	17.5	350
										300	445	400	370	24	4	23	12	17.5	450
										400	565	515	480	25	4	25	16	17.5	450
500	670	620	582	33	4	28	20	19.8	1000	250	395	350	319	25	4	23	12	18	400
										300	445	400	370	24	4	23	12	19.5	500
										400	565	515	480	28	4	28	16	19.8	500
										500	670	620	582	33	4	25	20	19.8	500
600	780	725	682	36	5	31	20	22.2	1100	300	445	400	370	24	4	23	12	19.5	550
										400	565	515	480	28	4	28	16	22.2	550
										500	670	620	582	33	4	28	20	22.2	550
										600	780	725	682	36	5	31	20	22.2	550